

Fig - 2.8
 Typical Cross Section
 2- lane Carriageway With One Side Retaining Wall
 (Open Country - Mountainous Terrain)

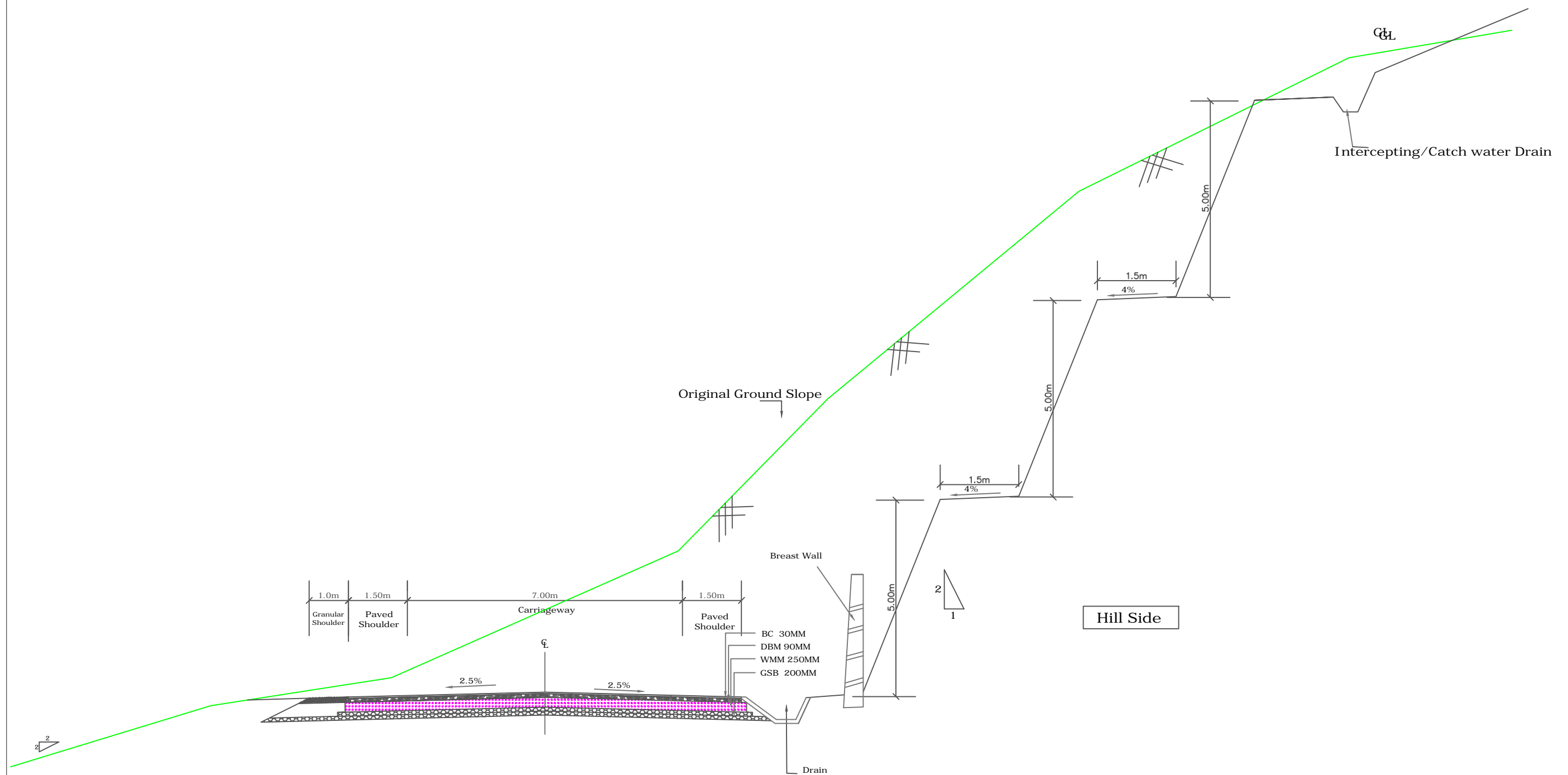


Fig - 2.9
 Typical Cross Section
 2- lane Carriageway Without Retaining Wall
 (Open Country - Mountainous Terrain)

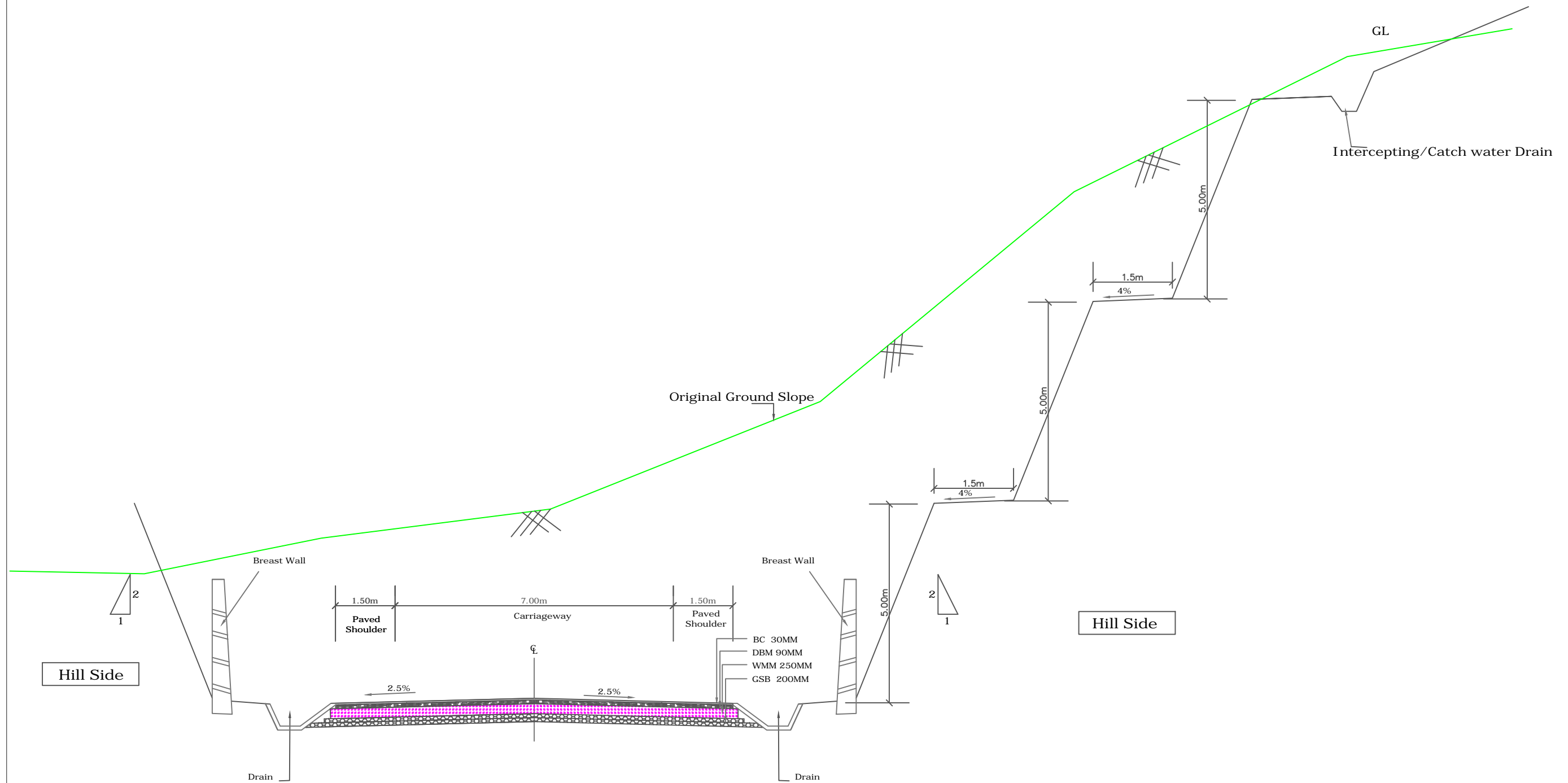


Fig - 2.11 (new)
 (Hilly Terrain) Typical Cross Section
 2- lane Carriageway With Paved Shoulders
 (Through Cut) Hill Section