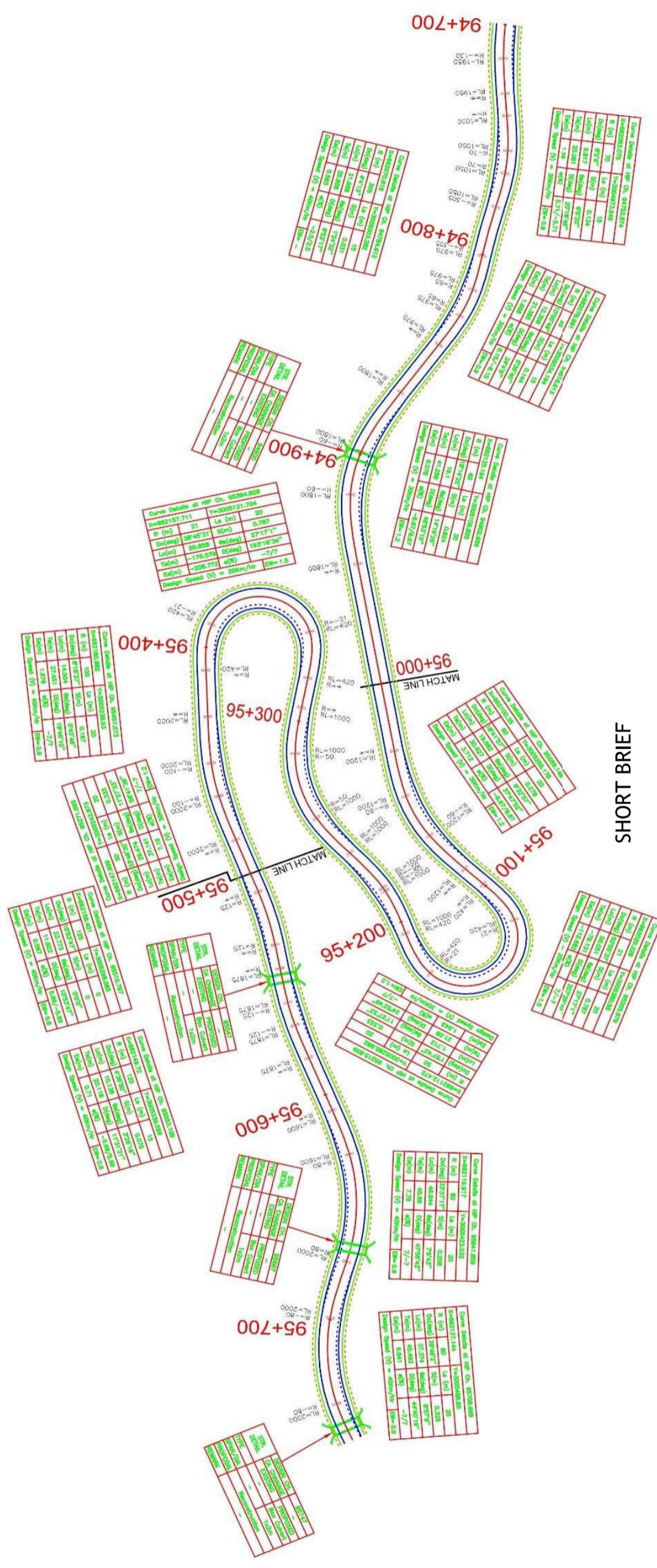


PLAN DRAWING HIGHWAY



SHORT BRIEF

1. PROVISION OF CONSTRUCTION OF PROJECT HIGHWAY; INCLUDING PROVISION OF ROCKFALL BARRIER (CATEGORIE-A, 8000KJ);
2. PROVISION OF SLOPE PROTECTION WORKS INCLUDING LANDSLIDE MITIGATION;
3. PROVISION OF SUPPLY OF MACHINERY, LANDSLIDE CLEARANCE AND DISASTER MANAGEMENT.

Material Properties

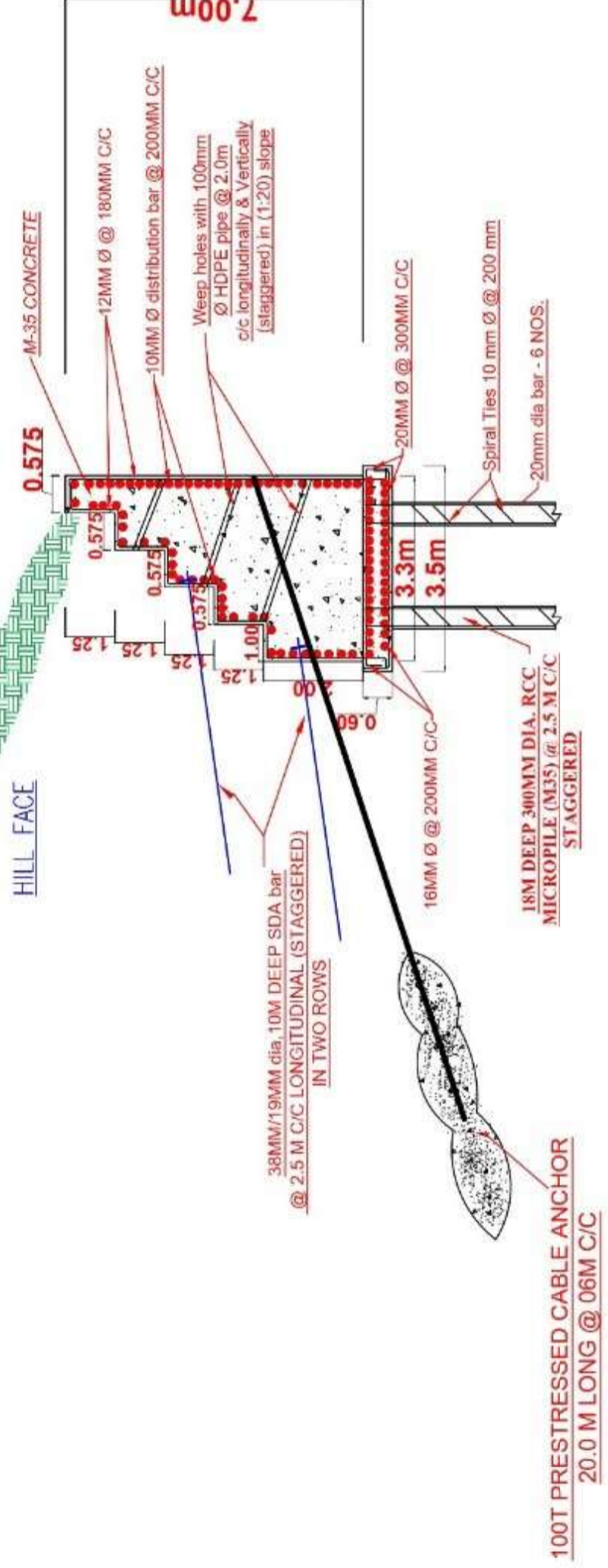
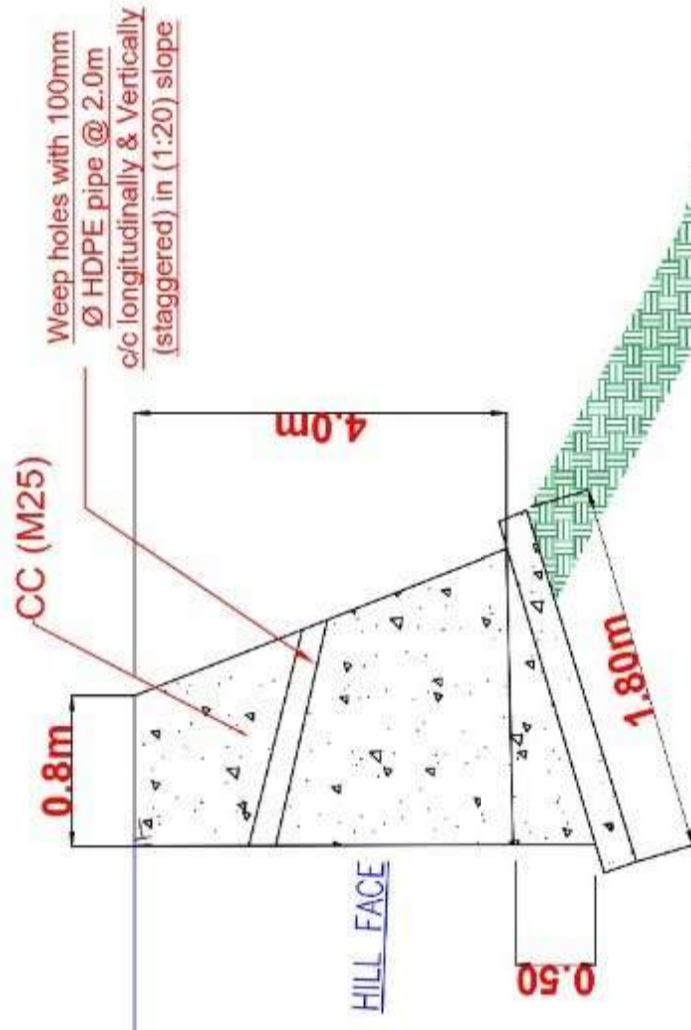
- o Concrete: M35Grade (fck=35 N/mm²)
- o Steel: Fe500 Grade (fy=500 N/mm²)
- o Clear cover: 50 mm (foundation), 40 mm (stem)
- o Micropiling Concrete: M35Grade (fck=35 N/mm²)

IV) Km (95+360 to 95+560 & 95+610 TO 95+660)

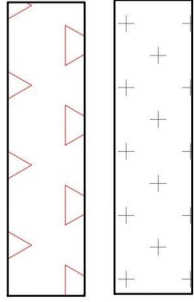
Proposed 4m high CC Gravity wall (M25) &

7m height RCC wall over 18m deep 300mm Dia Microipile

ROAD LEVEL



INDEX:



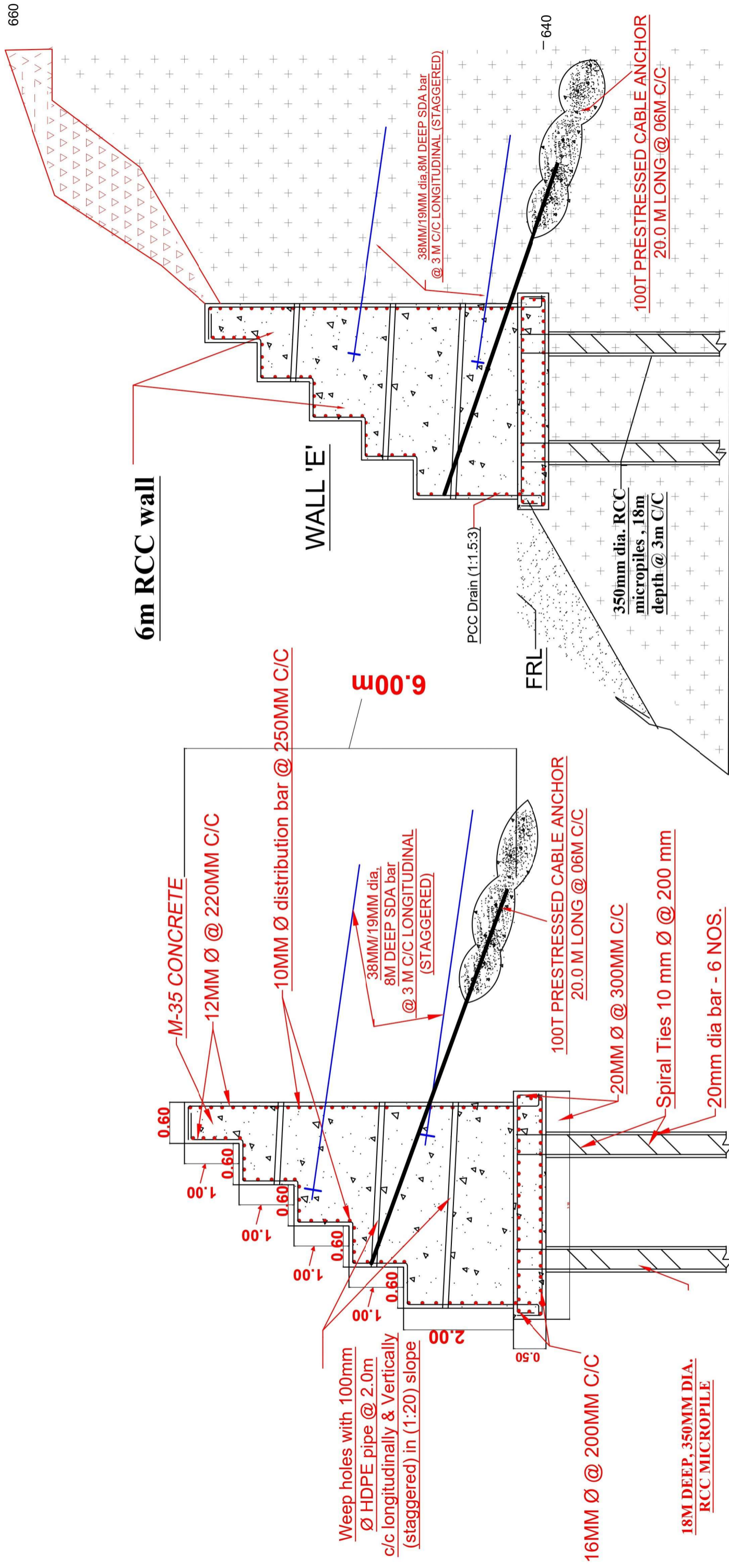
OVERBURDEN/ SLIDE DEBRIS

PHYLLITIC, QUARTZITE

(Km 95+200 to 95+360)

Material Properties

- o Concrete: M35Grade (fck=35 N/mm²)
- o Steel: Fe500 Grade (fy=500 N/mm²)
- o Clear cover: 50 mm (foundation), 40 mm (stem)
- o Micropiling Concrete: M35Grade (fck=35 N/mm²)



6m RCC wall

WALL 'E'

(Section - Km 95+340)

**WALL 'E': 6M RCC WALL OVER
18M DEEP 350MM DIA. RCC MICROPILE**

Material Properties

- o Concrete: M35Grade (fck=35 N/mm²)
- o Steel: Fe500 Grade (fy=500 N/mm²)
- o Clear cover: 50 mm (foundation), 40 mm (stem)
- o Micropiling Concrete: M35Grade (fck=35 N/mm²)

PHASE-I HILL SIDE:

1) Km (95+380 TO 95+560)

8m high RCC Stepped wall over 300 mm dia - micropile of depth= 18m

