

E 647300
N 3000250

E 647275
N 3000275

E 647250
N 3000300

E 647225
N 3000325

E 647175
N 3000350

E 647150
N 3000375

E 647125

40+050
40+055
40+060
40+065
40+070
40+075
40+080
40+085
40+090
40+095
40+100
40+105
40+110
40+115
40+120

CC CLADDING WALL WITH WITH

Ø38MM SELF DRILLING ANCHOR
8.0M LONG
SPACING @ 2.5M X 2.5M C/C

GABION WALL

RCN + DT MESH +
COIR MAT

75MM Ø PVC DRAIN PIPE
WITH 10.0 M LONG @5.0M C/C

RCC STEPPED WALL WITH
Ø38MM SELF DRILLING ANCHOR
12.0M LONG SPACING
@2.0M C/C

1.	GABION WALL	
2.	RCN + DT MESH + COIR MAT	
3.	CC CLADDING WALL	
4.	RCC STEPPED WALL	
5.	SDA	
6.	PVC DRAINAGE PIPE	

KM 40.05 PLAN

SLANT HT. 100.0M
STRECH 70.0M
ANGLE 42°

CLIENT : NATIONAL HIGHWAYS & INFRASTRUCTURE DEVELOPMENT CORPORATION LIMITED

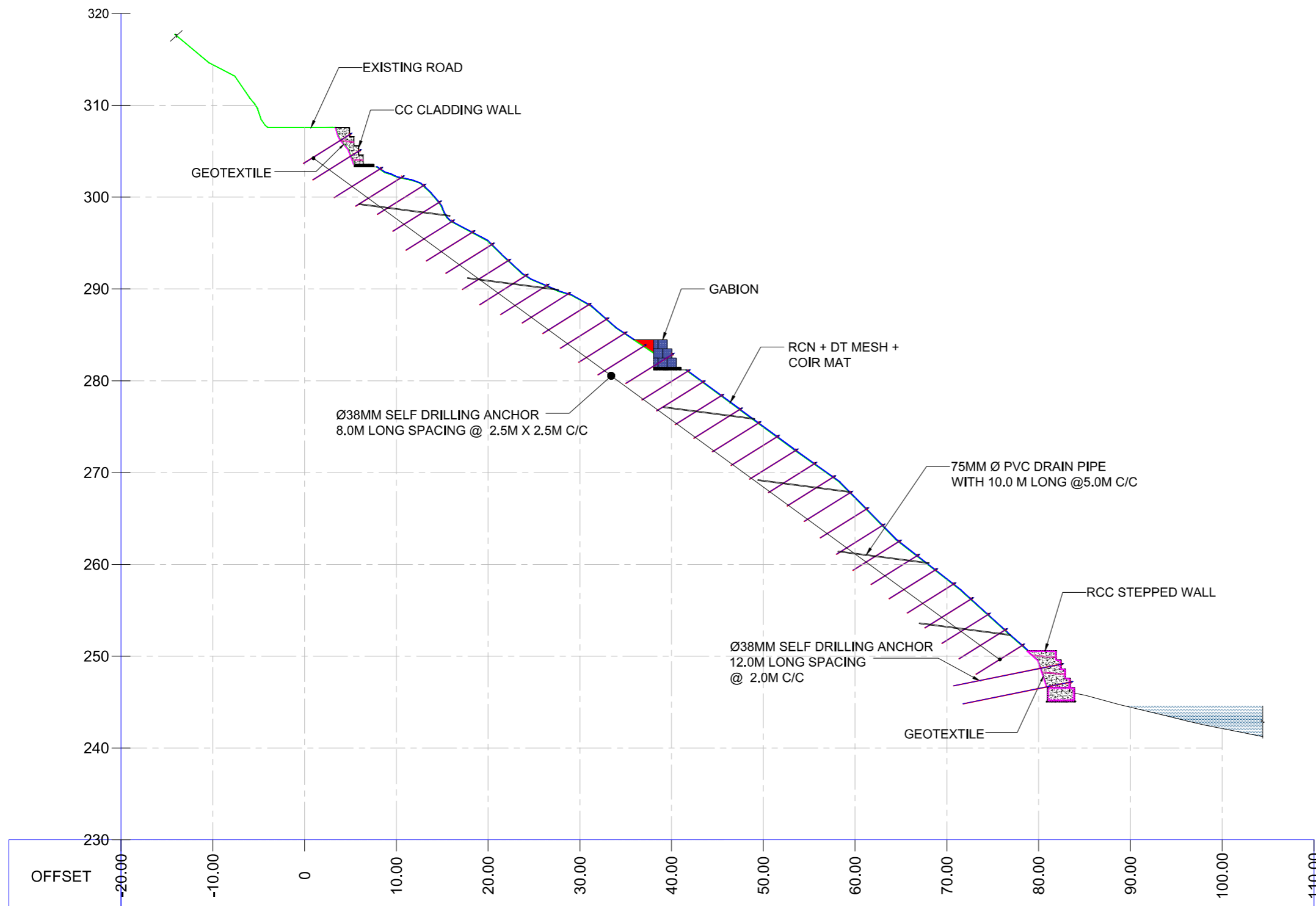
PROJECT : Widening to 2-Lane with paved shoulder along with specialized slope protection works in vulnerable sinking/sliding zones from Km. 0 to 52.100 of NH-10 (Sevoke-Rangpo Section) in the state of West Bengal (Repair and Rehabilitation of Hill and Valley side)

CONSULTANT: M/S MSV INTERNATIONAL INC. IN ASSOCIATION WITH M/S DAYANANDAMAN CONSTRUCTION & CONSULTANT PVT. LTD.

STABILITY MEASURES
FOR LOCATION NO: KM-40.05 AT CH. 40+050 TO CH. 40+120 (SEVOKE - RANGPO SECTION) NH -10 WEST BENGAL



SHEET 1 OF 3

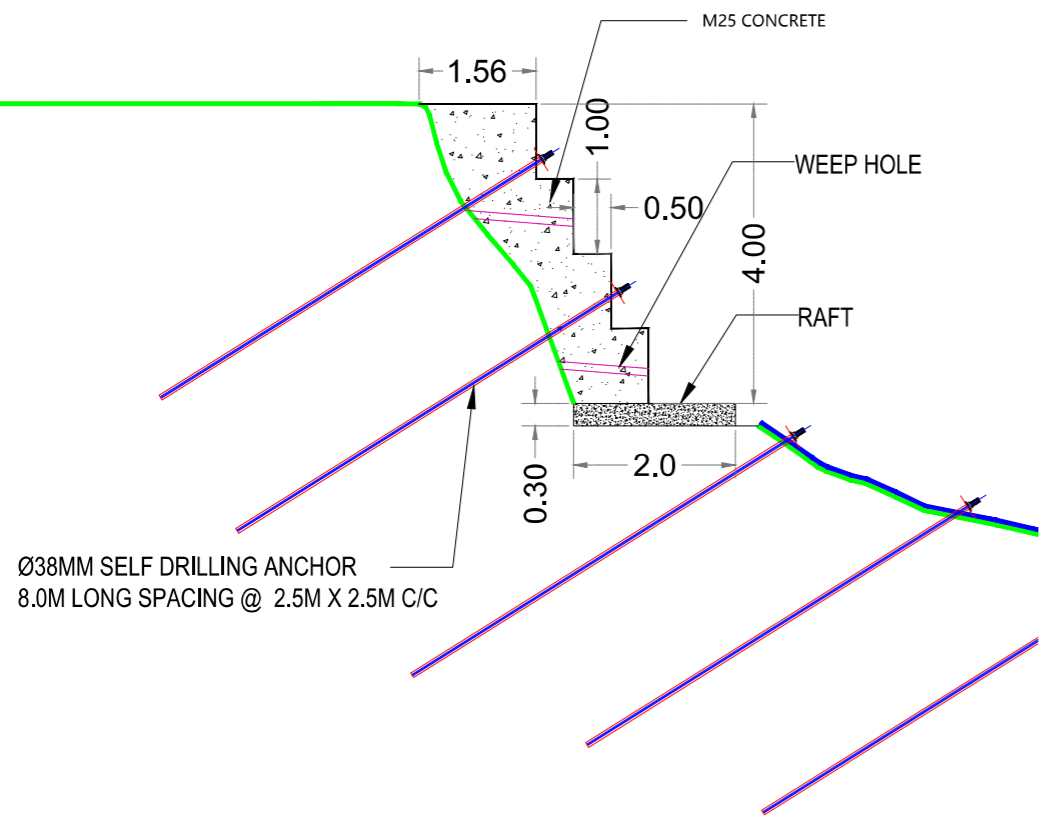
DRAWN	PREPARED	DESIGNED	CHECKED	RECOMMENDED	APPROVED
DRG. NO. DACC/RKSH/D&E/NHIDCL/NH-10/L-KM40.05/TD-01	DATE	D&E			



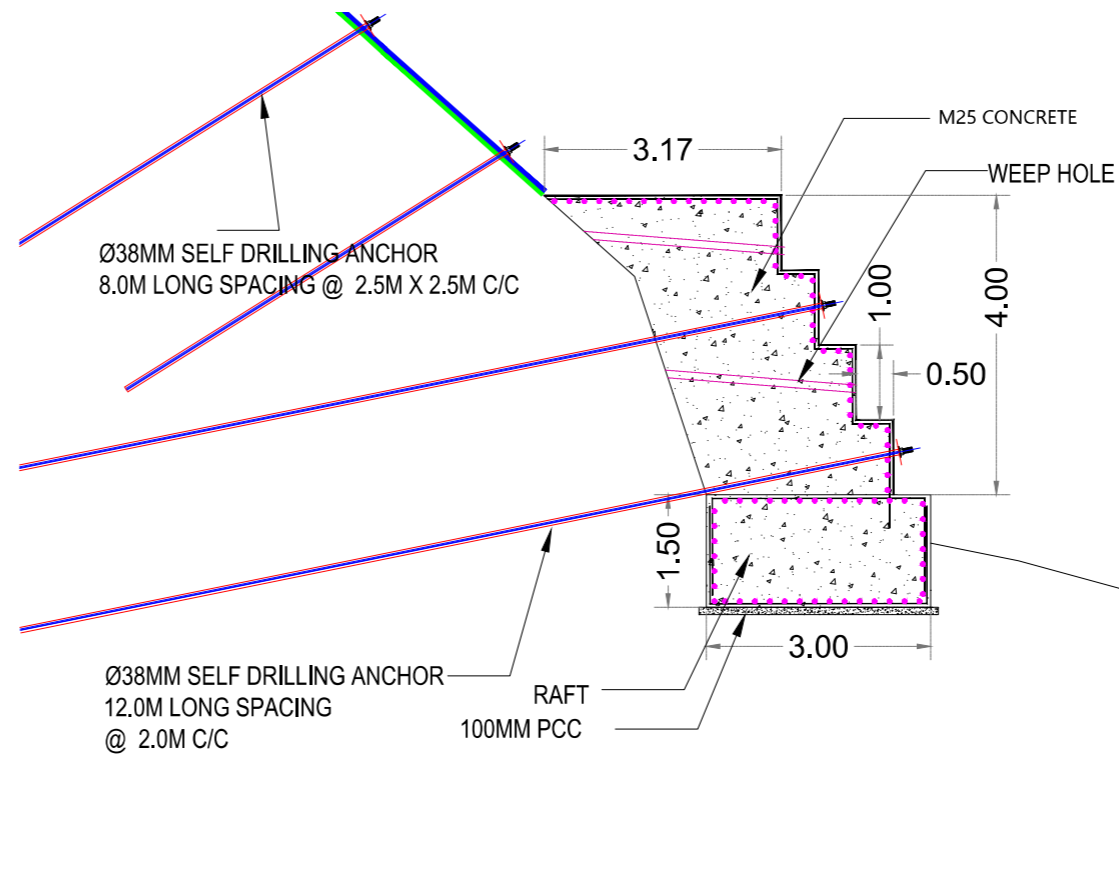
KM 40.05 SECTION CH. 40+075
APPLICABLE FROM CH 40+050 TO CH 40+120

SLANT HT. 100.0M
STRECH 70.0M
ANGLE 42°

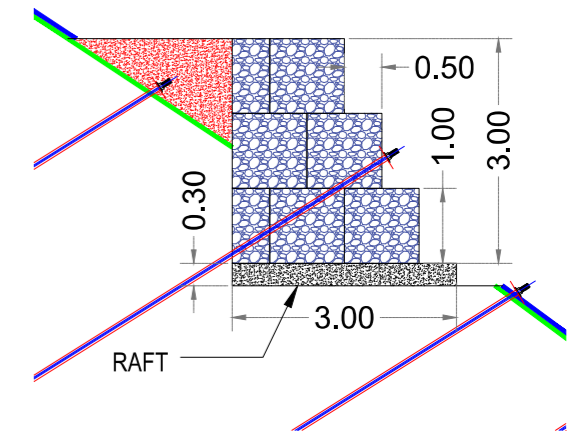
CLIENT:		 NATIONAL HIGHWAYS & INFRASTRUCTURE DEVELOPMENT CORPORATION LIMITED			
PROJECT : Widening to 2-Lane with paved shoulder along with specialized slope protection works in vulnerable sinking/sliding zones from Km. 0 to 52.100 of NH-10 (Sevoke-Rangpo Section) in the state of West Bengal (Repair and Rehabilitation of Hill and Valley side)					
CONSULTANT:		 M/S MSV INTERNATIONAL INC. IN ASSOCIATION WITH M/S DAYANANDAMAN CONSTRUCTION & CONSULTANT PVT. LTD.			
STABILITY MEASURES FOR LOCATION NO: KM-40.05 AT CH. 40+050 TO CH. 40+120 (SEVOKE - RANGPO SECTION) NH-10 WEST BENGAL					
SHEET 1 OF 3					
DRAWN	PREPARED	DESIGNED	CHECKED	RECOMMENDED	APPROVED
DRG. NO. DACC/RKSH/D&E/NHIDCL/NH-10/L-KM40.05/TD-01				DATE	D&E



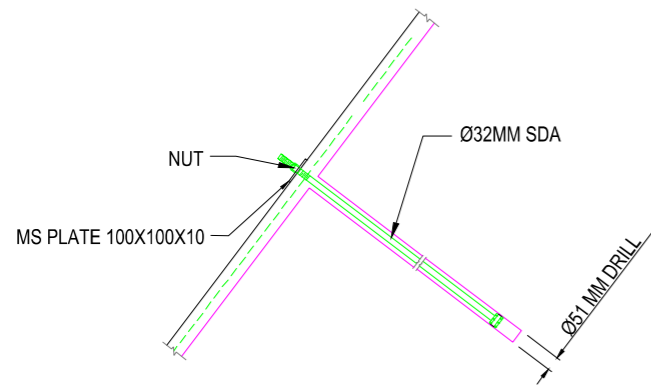
SECTION CH 40+075
TYPICAL DETAILS CC CLADDING WALL



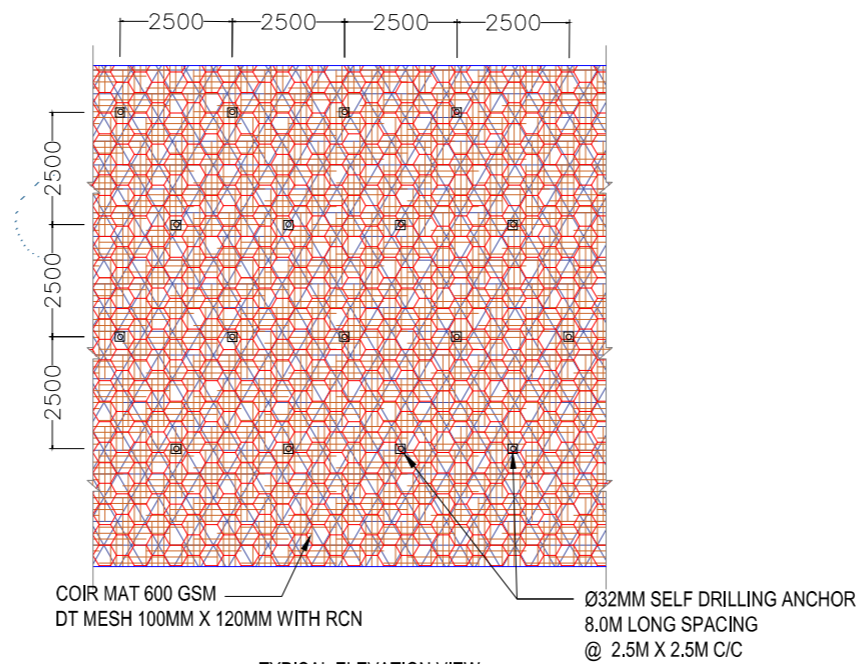
SECTION CH 40+075
TYPICAL DETAILS RCC STEPPED WALL





TYPICAL DETAILS GABION WALL
(NTS)



TYPICAL DETAIL OF
SELF DRILL ANCHOR (SDA)
(NTS)



TYPICAL ELEVATION VIEW
COMPOSITE MESH SYSTEM
(NTS)

CLIENT :  NATIONAL HIGHWAYS & INFRASTRUCTURE DEVELOPMENT CORPORATION LIMITED					
PROJECT : Widening to 2-Lane with paved shoulder along with specialized slope protection works in vulnerable sinking/sliding zones from Km. 0 to 52.100 of NH-10 (Sevoke-Rangpo Section) in the state of West Bengal (Repair and Rehabilitation of Hill and Valley side)					
CONSULTANT :  M/S MSV INTERNATIONAL INC. <small>IN ASSOCIATION WITH</small> M/S DAYANANDAMAN CONSTRUCTION & CONSULTANT PVT. LTD.					
STABILITY MEASURES FOR LOCATION NO: KM-40.05 AT CH. 40+050 TO CH. 40+120 (SEVOKE - RANGPO SECTION) NH-10 WEST BENGAL					
SHEET 1 OF 3					
DRAWN	PREPARED	DESIGNED	CHECKED	RECOMMENDED	APPROVED
DRG. NO. DACC/RKSH/D&E/NHIDCL/NH-10/L-KM40.05/TD-01				DATE	D&E