

E 651750

E 651725

E 651700

E 651675

E 651650

N 3004750

N 3004725

N 3004700

N 3004675

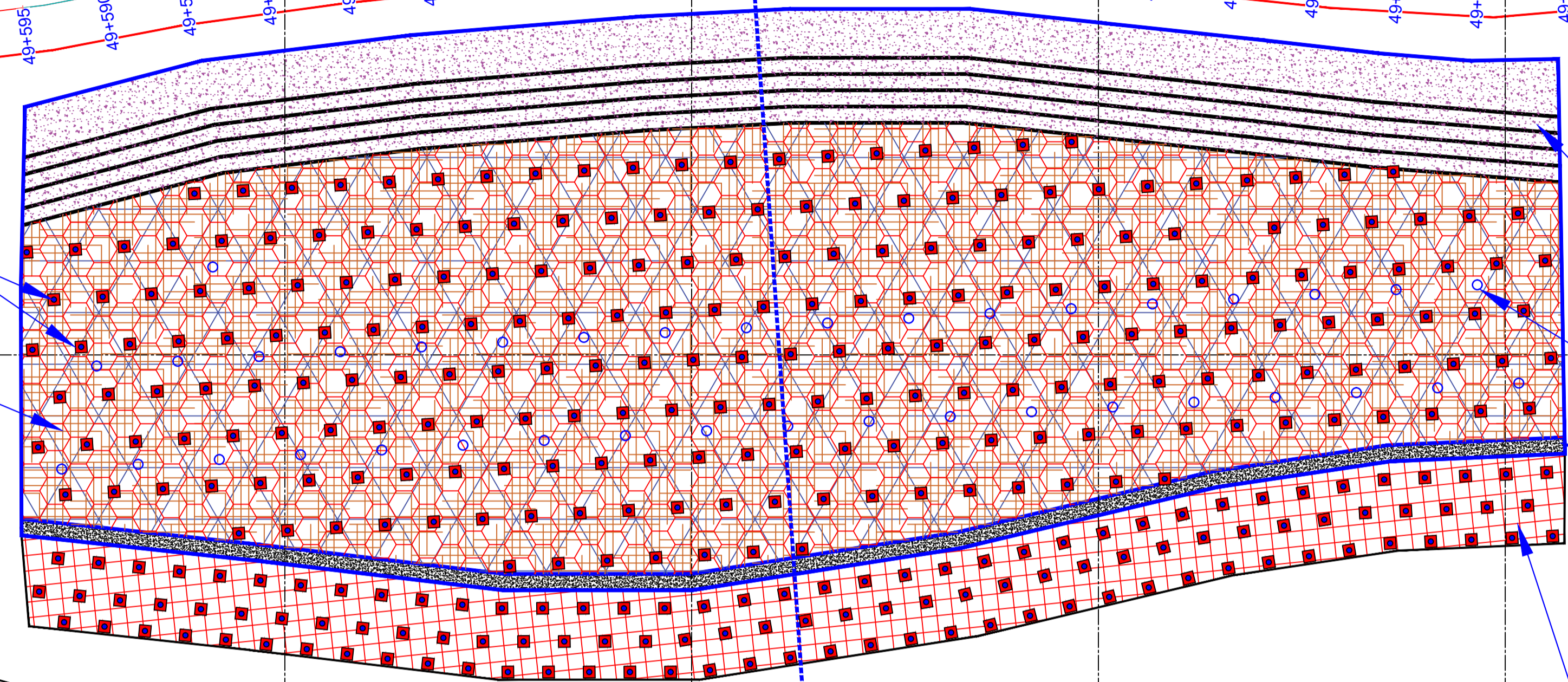
N 3004650

N 3004625

N 3004600

49+550

49+550



Ø38MM SELF DRILLING ANCHOR
8.0M LONG SPACING @ 2.5M X 2.5M C/C

RCN + DT MESH +
COIR MAT

PCC STEPPED WALL

75MM Ø PVC DRAIN PIPE
WITH 10.0 M LONG @5.0M C/C

RCC WALL 7.0M HEIGHT WITH
Ø38MM SELF DRILLING ANCHOR
12.0M LONG SPACING
@ 2.0M C/C

GABION
MATTRESS

KM 49.50 PLAN

SLANT HT. 40.0M
STRECH 95.0M
ANGLE 33°

1.	PCC STEPPED WALL	
2.	RCC WALL	
3.	GABION MATTRESS	
4.	RCN + DT MESH + COIR MAT	

CLIENT : NATIONAL HIGHWAYS & INFRASTRUCTURE DEVELOPMENT CORPORATION LIMITED

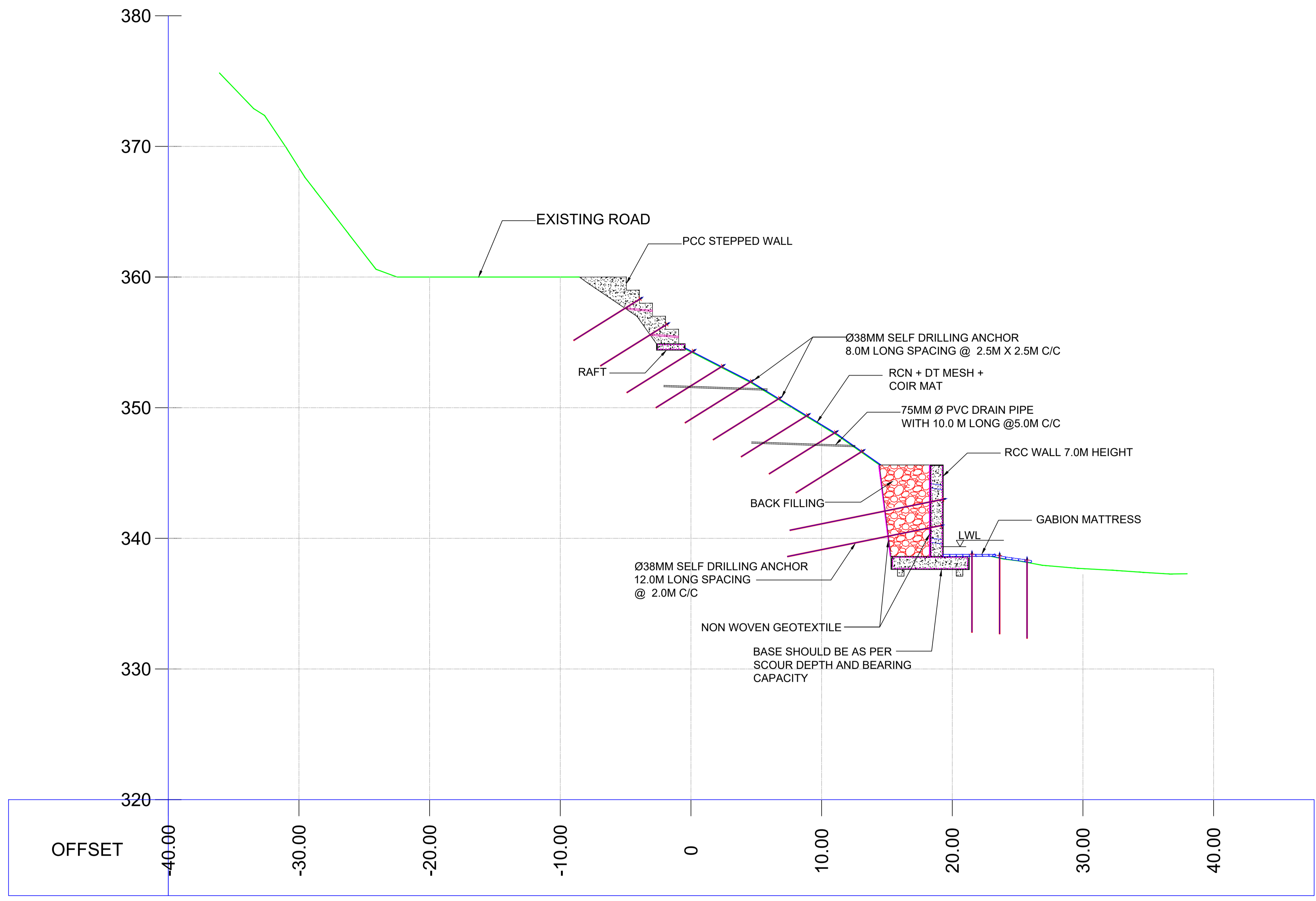
PROJECT : Widening to 2-Lane with paved shoulder along with specialized slope protection works in vulnerable sinking/sliding zones from Km. 0 to 52.100 of NH-10 (Sevoke-Rangpo Section) in the state of West Bengal (Repair and Rehabilitation of Hill and Valley side)

CONSULTANT: M/S MSV INTERNATIONAL INC. IN ASSOCIATION WITH M/S DAYANANDAMAN CONSTRUCTION & CONSULTANT PVT. LTD.

STABILITY MEASURES FOR LOCATION NO: KM-49.50 AT CH. 49+500 TO CH. 49+595 (SEVOKE - RANGPO SECTION) NH -10 WEST BENGAL




SHEET 1 OF 3

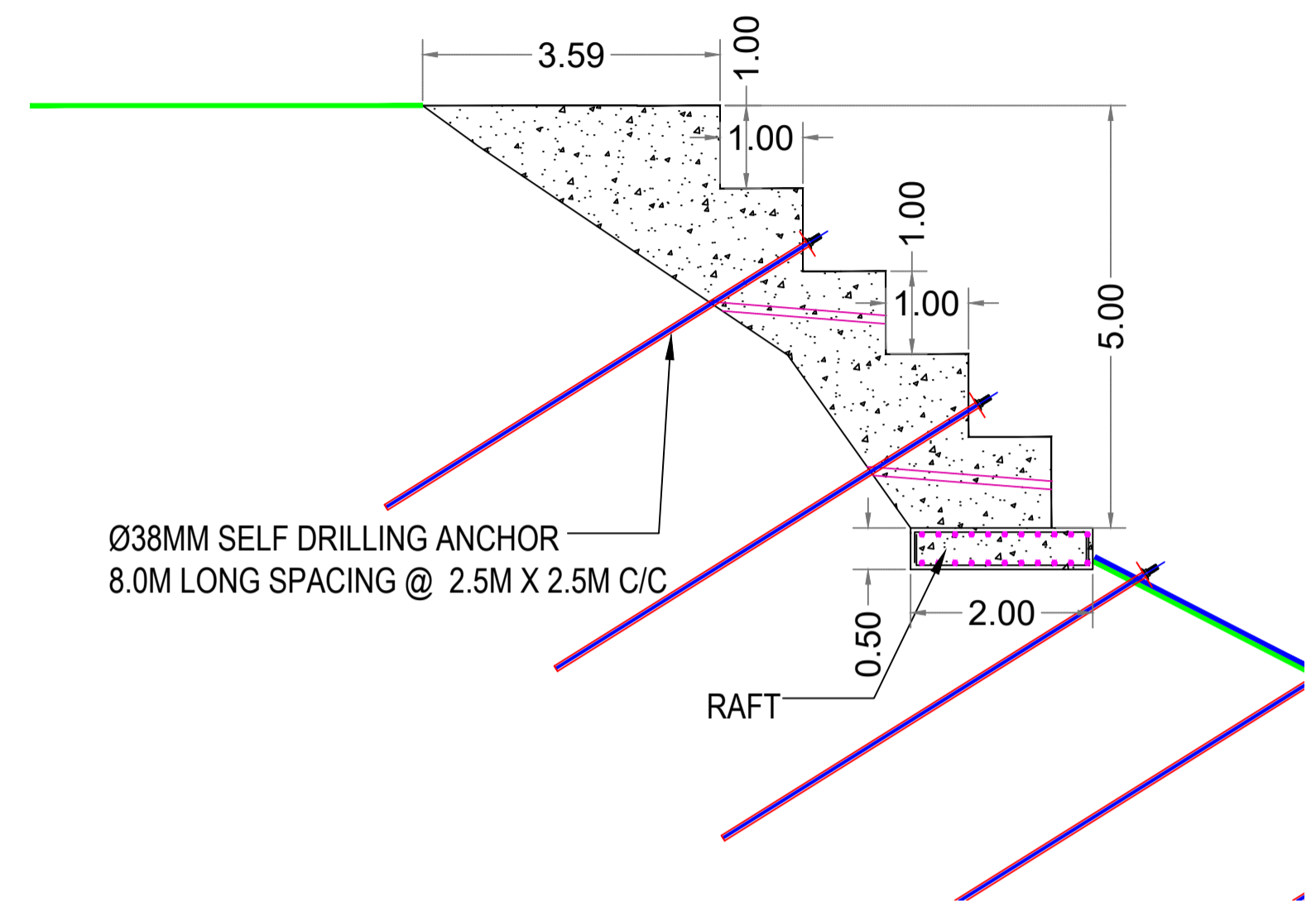
DRAWN	PREPARED	DESIGNED	CHECKED	RECOMMENDED	APPROVED
DRG. NO. DACC/RKSH/D&E/NHIDCL/NH-10/L-KM49.50/TD-01	DATE	D&E			



SLANT HT. 40.0M
STRECH 95.0M
ANGLE 33°

KM 49.50 SECTION CH. 49+550
APPLICABLE FROM CH. 49+500 TO 49+595

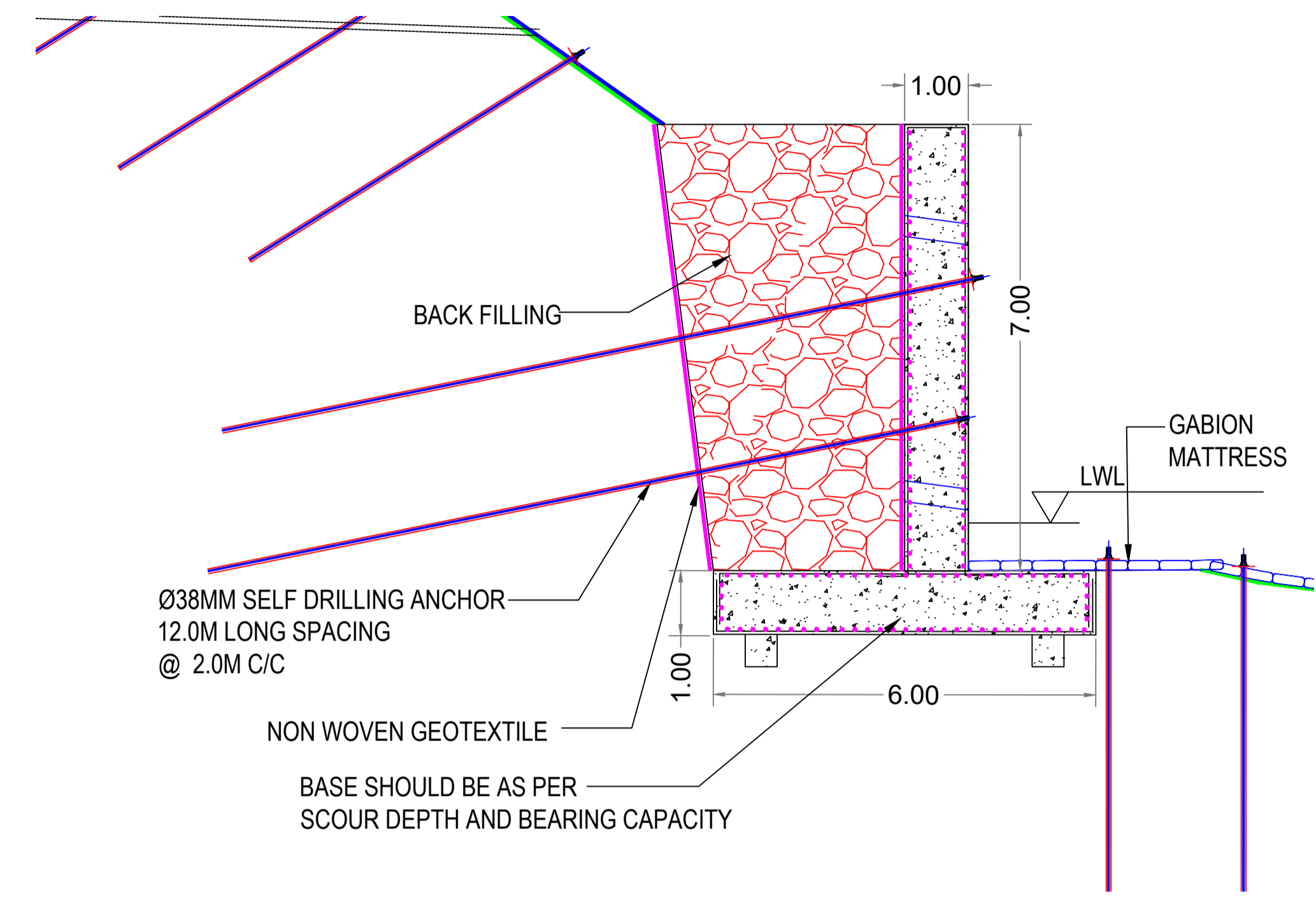
CLIENT :  NATIONAL HIGHWAYS & INFRASTRUCTURE DEVELOPMENT CORPORATION LIMITED	
PROJECT : Widening to 2-Lane with paved shoulder along with specialized slope protection works in vulnerable sinking/sliding zones from Km. 0 to 52.100 of NH-10 (Sevoke-Rangpo Section) in the state of West Bengal (Repair and Rehabilitation of Hill and Valley side)	
CONSULTANT:  M/S MSV INTERNATIONAL INC. IN ASSOCIATION WITH  M/S DAYANANDAMAN CONSTRUCTION & CONSULTANT PVT. LTD.	
STABILITY MEASURES FOR LOCATION NO: KM-49.50 AT CH. 49+500 TO CH. 49+595 (SEVOKE - RANGPO SECTION) NH-10 WEST BENGAL	
SHEET 2 OF 3	
DRAWN DRG. NO. DACC/RKSH/D&E/NHIDCL/NH-10/L-KM49.50/TD-01	PREPARED DATE
DESIGNED DATE	CHECKED DATE
RECOMMENDED DATE	APPROVED DATE



Ø38MM SELF DRILLING ANCHOR
8.0M LONG SPACING @ 2.5M X 2.5M C/C

RAFT

SECTION CH 49+550
TYPICAL DETAILS PCC STEPPED WALL

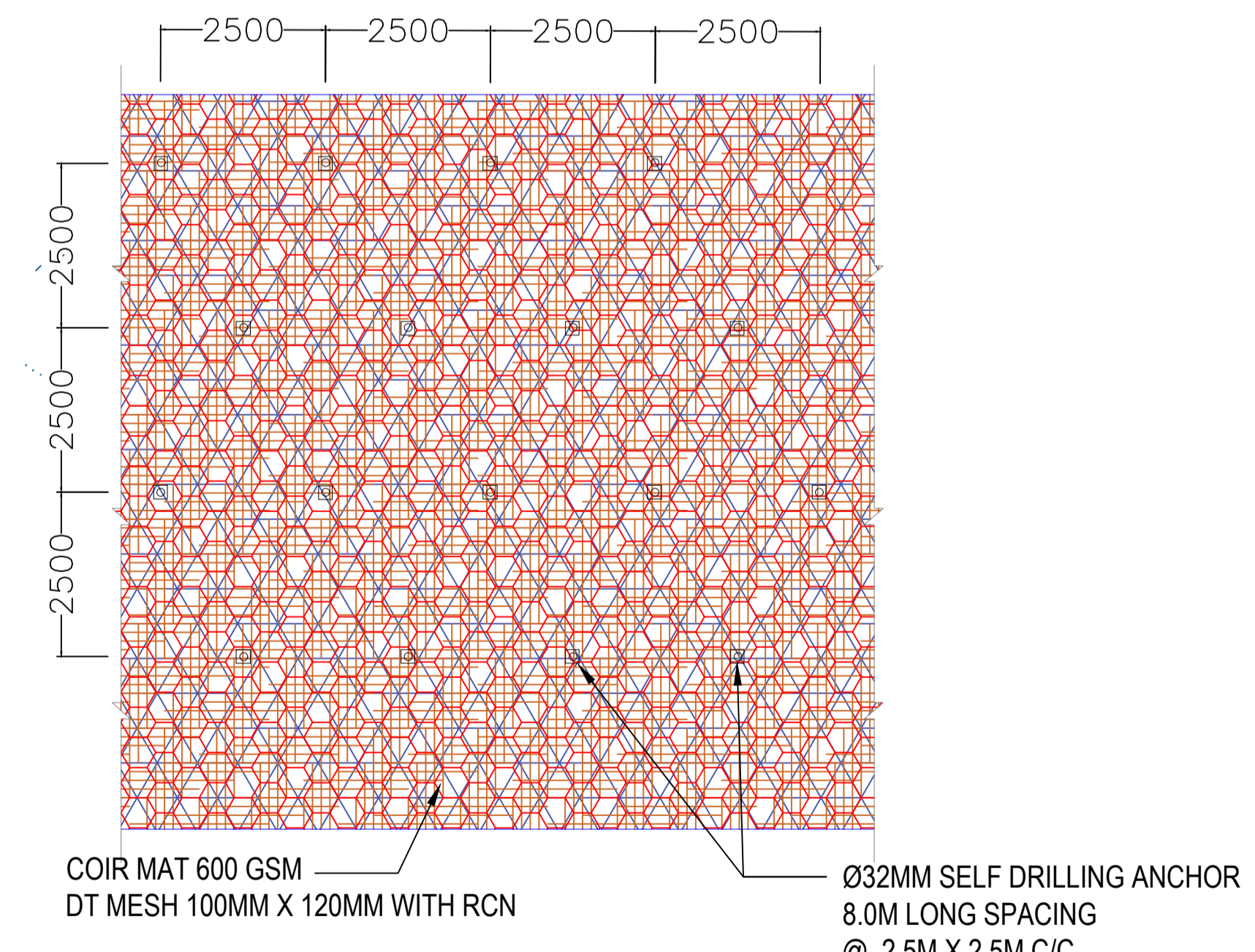


Ø38MM SELF DRILLING ANCHOR
12.0M LONG SPACING
@ 2.0M C/C

NON WOVEN GEOTEXTILE

BASE SHOULD BE AS PER
SCOUR DEPTH AND BEARING CAPACITY

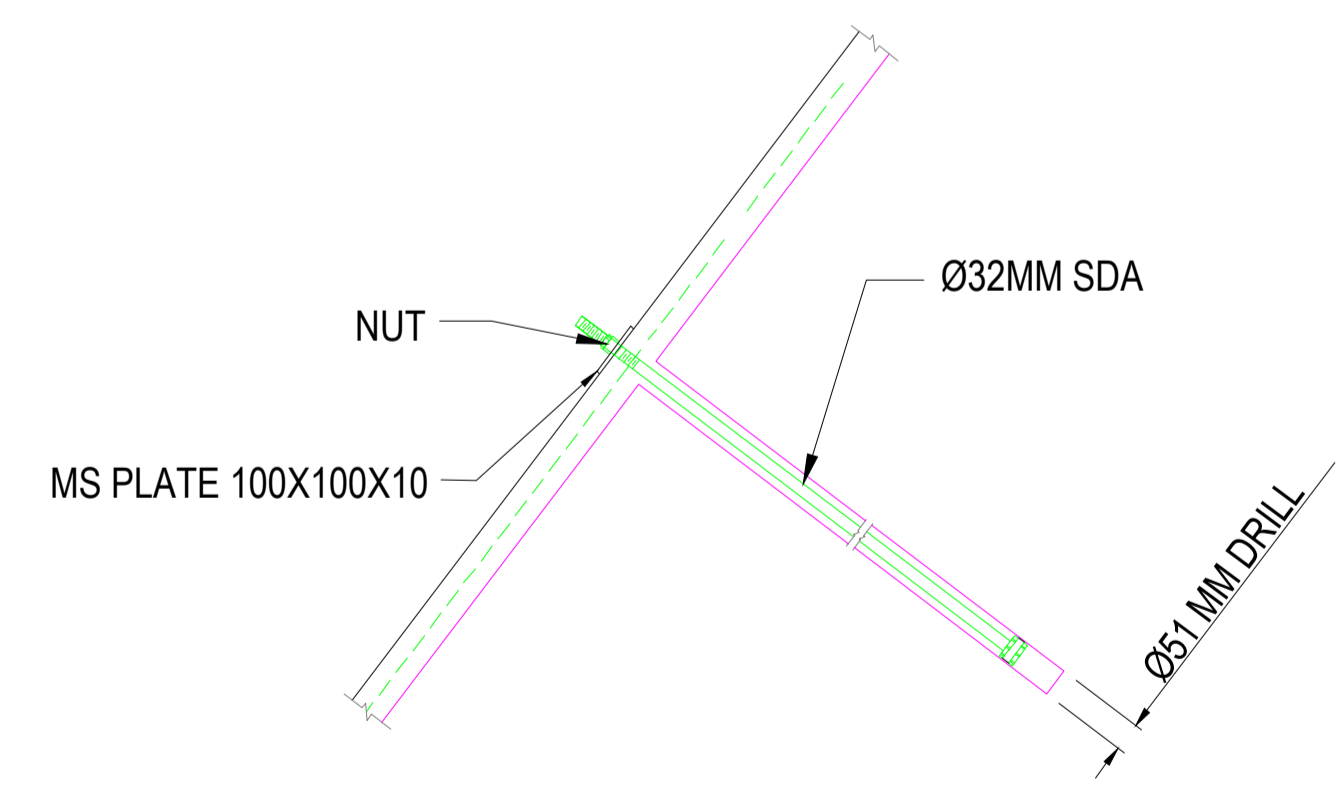
SECTION CH 49+550
TYPICAL DETAILS RCC WALL






COIR MAT 600 GSM
DT MESH 100MM X 120MM WITH RCN

Ø32MM SELF DRILLING ANCHOR
8.0M LONG SPACING
@ 2.5M X 2.5M C/C

TYPICAL ELEVATION VIEW
COMPOSITE MESH SYSTEM
(NTS)



TYPICAL DETAIL OF
SELF DRILL ANCHOR (SDA)
(NTS)

CLIENT :  NATIONAL HIGHWAYS & INFRASTRUCTURE DEVELOPMENT CORPORATION LIMITED					
PROJECT : Widening to 2-Lane with paved shoulder along with specialized slope protection works in vulnerable sinking/sliding zones from Km. 0 to 52.100 of NH-10 (Sevoke-Rangpo Section) in the state of West Bengal (Repair and Rehabilitation of Hill and Valley side)					
CONSULTANT :  M/S MSV INTERNATIONAL INC. IN ASSOCIATION WITH  M/S DAYANANDAMAN CONSTRUCTION & CONSULTANT PVT. LTD.					
STABILITY MEASURES FOR LOCATION NO: KM-49.50 AT CH. 49+500 TO CH. 49+595 (SEVOKE - RANGPO SECTION) NH -10 WEST BENGAL					
SHEET 3 OF 3					
DRAWN	PREPARED	DESIGNED	CHECKED	RECOMMENDED	APPROVED
DRG. NO. DACC/RKSH/D&E/NHIDCL/NH-10/L-KM49.50/TD-01				DATE	D&E