

N E 641625  
N 2991200

N 2991225

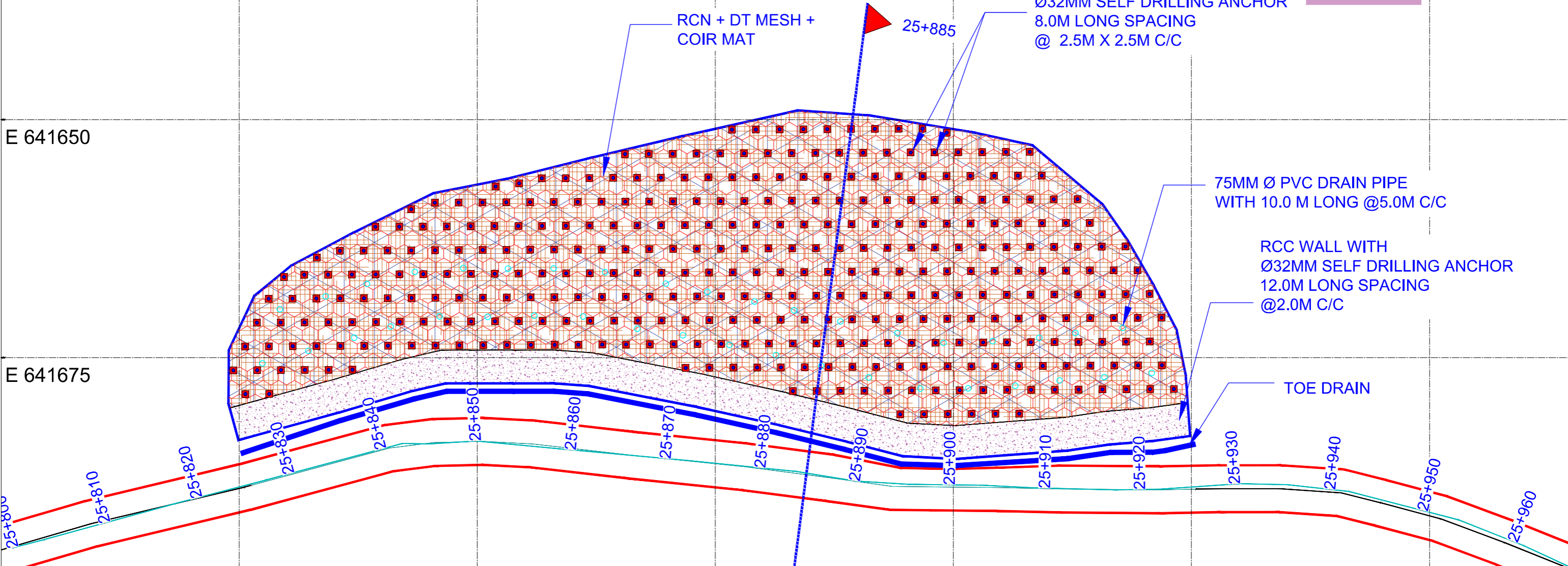
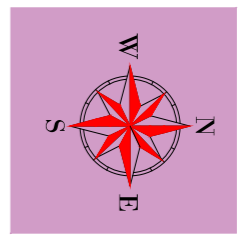
N 2991250

N 2991275

N 2991300

N 2991325

N 2991350



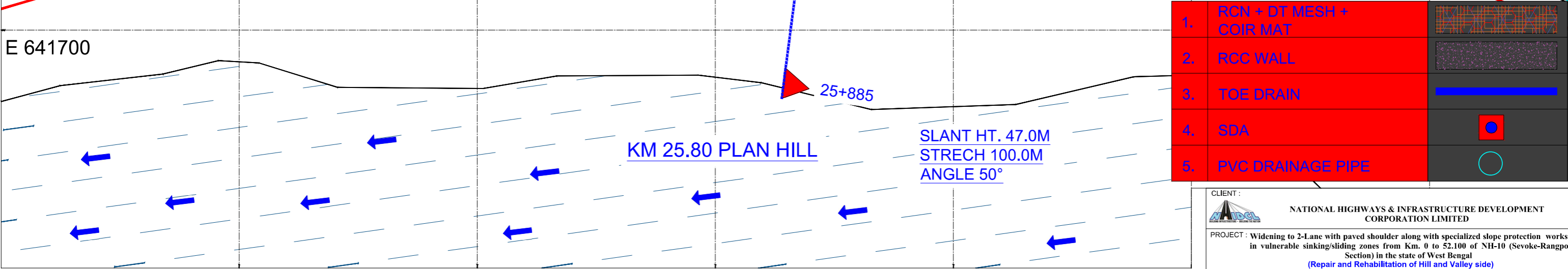
RCN + DT MESH + COIR MAT

Ø32MM SELF DRILLING ANCHOR  
8.0M LONG SPACING  
@ 2.5M X 2.5M C/C

75MM Ø PVC DRAIN PIPE  
WITH 10.0 M LONG @5.0M C/C

RCC WALL WITH  
Ø32MM SELF DRILLING ANCHOR  
12.0M LONG SPACING  
@2.0M C/C

TOE DRAIN



KM 25.80 PLAN HILL

SLANT HT. 47.0M  
STRECH 100.0M  
ANGLE 50°

|    |                          |  |
|----|--------------------------|--|
| 1. | RCN + DT MESH + COIR MAT |  |
| 2. | RCC WALL                 |  |
| 3. | TOE DRAIN                |  |
| 4. | SDA                      |  |
| 5. | PVC DRAINAGE PIPE        |  |

CLIENT :  
 NATIONAL HIGHWAYS & INFRASTRUCTURE DEVELOPMENT CORPORATION LIMITED

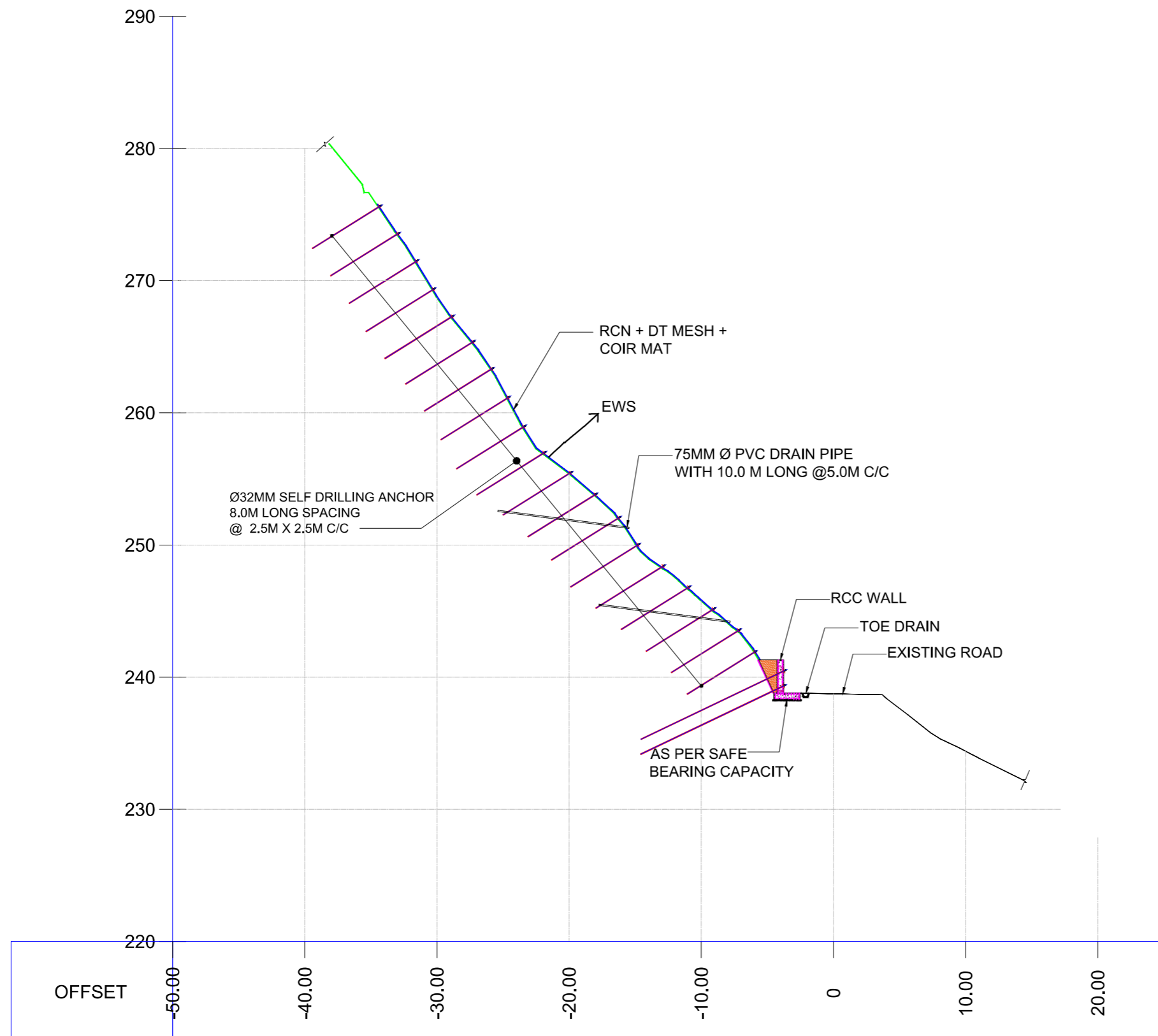
PROJECT : Widening to 2-Lane with paved shoulder along with specialized slope protection works in vulnerable sinking/sliding zones from Km. 0 to 52.100 of NH-10 (Sevoke-Rangpo Section) in the state of West Bengal (Repair and Rehabilitation of Hill and Valley side)

CONSULTANT :  
 M/S MSV INTERNATIONAL INC.  
IN ASSOCIATION WITH  
M/S DAYANANDAMAN CONSTRUCTION & CONSULTANT PVT. LTD.

STABILITY MEASURES  
FOR LOCATION NO: KM-25.800 AT CH. 25+800 TO CH. 26+500  
(SEVOKE - RANGPO SECTION)  
NH -10 WEST BENGAL



SHEET 1 OF 3

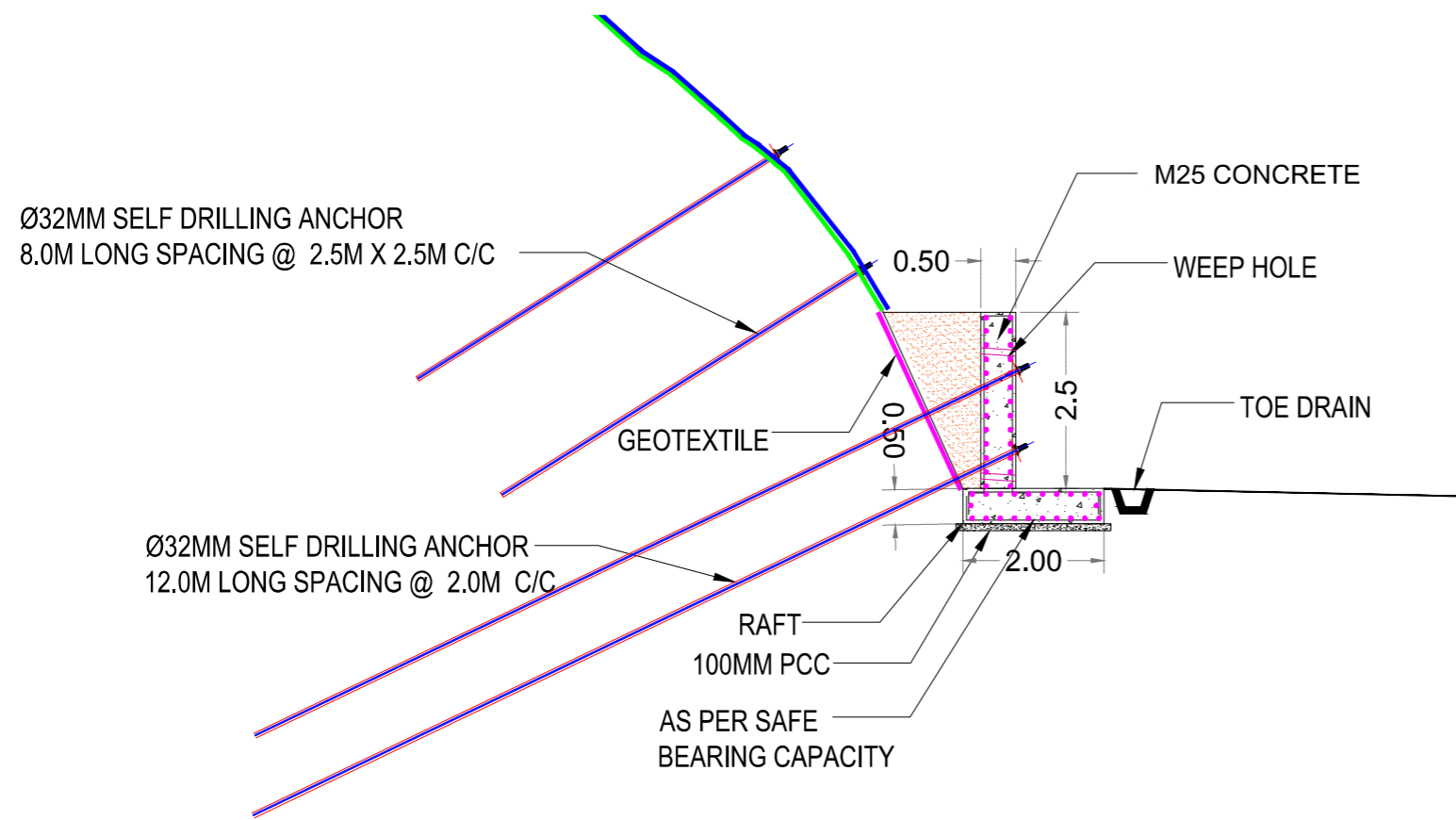
|   |          |          |         |             |          |
|---|----------|----------|---------|-------------|----------|
| DRAWN   | PREPARED | DESIGNED | CHECKED | RECOMMENDED | APPROVED |
| DRG. NO. DACC/RKSH/D&E/NHIDCL/NH-10/L-KM25.80/TD-01 | DATE     | D&E      |         |             |          |



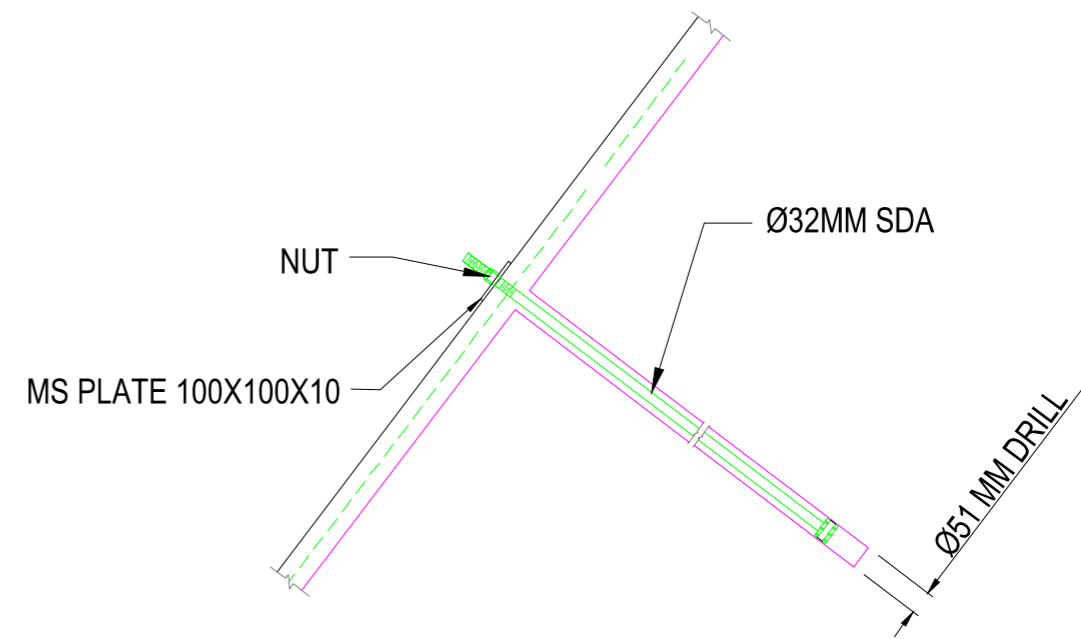
KM 25.80 HILL SECTION CH. 25+885  
 APPLICABLE FROM CH. 25+825 TO 25+925

SLANT HT. 47.0M  
 STRECH 100.0M  
 ANGLE 50°



|  |          |   |         |             |          |
|--|----------|---|---------|-------------|----------|
| CLIENT :   |          |  NATIONAL HIGHWAYS & INFRASTRUCTURE DEVELOPMENT CORPORATION LIMITED                                  |         |             |          |
| PROJECT : Widening to 2-Lane with paved shoulder along with specialized slope protection works in vulnerable sinking/sliding zones from Km. 0 to 52.100 of NH-10 (Sevoke-Rangpo Section) in the state of West Bengal (Repair and Rehabilitation of Hill and Valley side) |          |   |         |             |          |
| CONSULTANT:  |          |  M/S MSV INTERNATIONAL INC. IN ASSOCIATION WITH M/S DAYANANDAMAN CONSTRUCTION & CONSULTANT PVT. LTD. |         |             |          |
| STABILITY MEASURES<br>FOR LOCATION NO: KM-25.800 AT CH. 25+825 TO CH. 25+925<br>(SEVOKE - RANGPO SECTION)<br>NH -10 WEST BENGAL  |          |   |         |             |          |
|  |          | SHEET 2 OF 3  |         |             |          |
| DRAWN  | PREPARED | DESIGNED  | CHECKED | RECOMMENDED | APPROVED |
| DRG. NO. DACC/RKSH/D&E/NHIDCL/NH-10/L-KM25.80/TD-01  |          |   |         | DATE        | D&E      |



SECTION CH 25+885  
TYPICAL DETAILS RCC WALL



TYPICAL DETAIL OF  
SELF DRILL ANCHOR (SDA)  
(NTS)

|  |          |   |         |             |           |
|--|----------|---|---------|-------------|-----------|
| CLIENT :   |          |  NATIONAL HIGHWAYS & INFRASTRUCTURE DEVELOPMENT CORPORATION LIMITED                                  |         |             |           |
| PROJECT : Widening to 2-Lane with paved shoulder along with specialized slope protection works in vulnerable sinking/sliding zones from Km. 0 to 52.100 of NH-10 (Sevoke-Rangpo Section) in the state of West Bengal (Repair and Rehabilitation of Hill and Valley side) |          |   |         |             |           |
| CONSULTANT :   |          |  M/S MSV INTERNATIONAL INC. IN ASSOCIATION WITH M/S DAYANANDAMAN CONSTRUCTION & CONSULTANT PVT, LTD. |         |             |           |
| STABILITY MEASURES<br>FOR LOCATION NO: KM-25.800 AT CH. 25+825 TO CH. 25+925<br>(SEVOKE - RANGPO SECTION)<br>NH -10 WEST BENGAL  |          |   |         |             |           |
|  |          | SHEET 3 OF 3  |         |             |           |
| _____  | _____    | _____   | _____   | _____       | _____     |
| DRAWN  | PREPARED | DESIGNED  | CHECKED | RECOMMENDED | APPROVED  |
| DRG. NO. DACC/RKSH/D&E/NHIDCL/NH-10/L-KM25.80/TD-01  |          |   |         | DATE _____  | D&E _____ |